

DEEPCHEK®-HIV ASSAYS & SOFTWARE

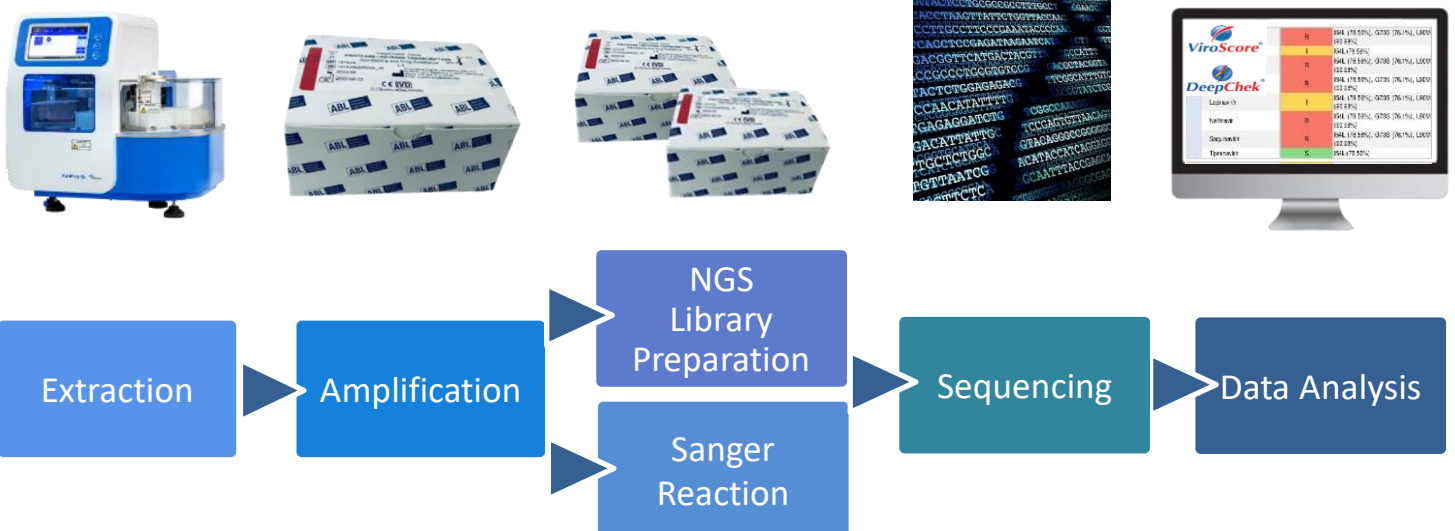
RT/PR – INT – V3 – Whole Genome

A unique and complete portfolio for HIV genotyping through Sanger & Next Generation (NGS) sequencing

These assays are a unique line of products dedicated to HIV-1 Genotyping and resistance determination through Sanger and NGS sequencing.

- RT / PROT (CE-IVD & RUO)
- INT (CE-IVD & RUO)
- V3 Loop (RUO)
- Whole Genome (CE-IVD & RUO)

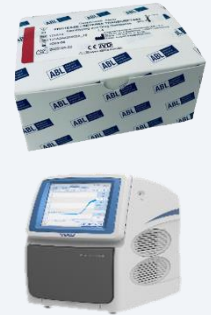
Workflow overview



HIGHLIGHTS

▪ PCR AMPLIFICATION (24 samples/kit)

	SANGER	NGS	
PROT	☑	☑	CE-IVD & RUO
RT	☑	☑	CE-IVD & RUO
INT	☑	☑	CE-IVD & RUO
Whole Genome		☑	CE-IVD & RUO
V3 Loop	☑	☑	RUO



▪ PCR instruments also available through reagent rental

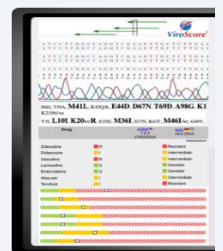
▪ SEQUENCING

- For **Sanger & Next Generation Sequencing (NGS)**
- **SANGER**: DeepChek® SANGER Sequencing Assay
- **NGS**: DeepChek® Library Preparation assays (incl. 24/48/96/384 indexes)
- **Sanger & NGS downstream sequencing instruments also available through reagent rental**



▪ DATA ANALYSIS

- Downstream sequencing analysis and interpretation with **CE-IVD** software
- Genotyping, Tropism determination, Drug resistance interpretation
- Complete and comprehensive reporting
- For **Sanger** (chromatogram editor integrated) & **NGS**
- Hosting: On premise (local servers) or Cloud (including Health Data Hosting compliance)
- **Servers also available through reagent rental**



▪ EXTRACTION (KITS & INSTRUMENTS)

- Manual or automated
- Optimized magnetic beads for fast extraction
- Easy to prepare and very good performance
- Fast Protocol : 96 samples within 24 minutes
- **Extraction instrument also available through reagent rental**



▪ AUTOMATION

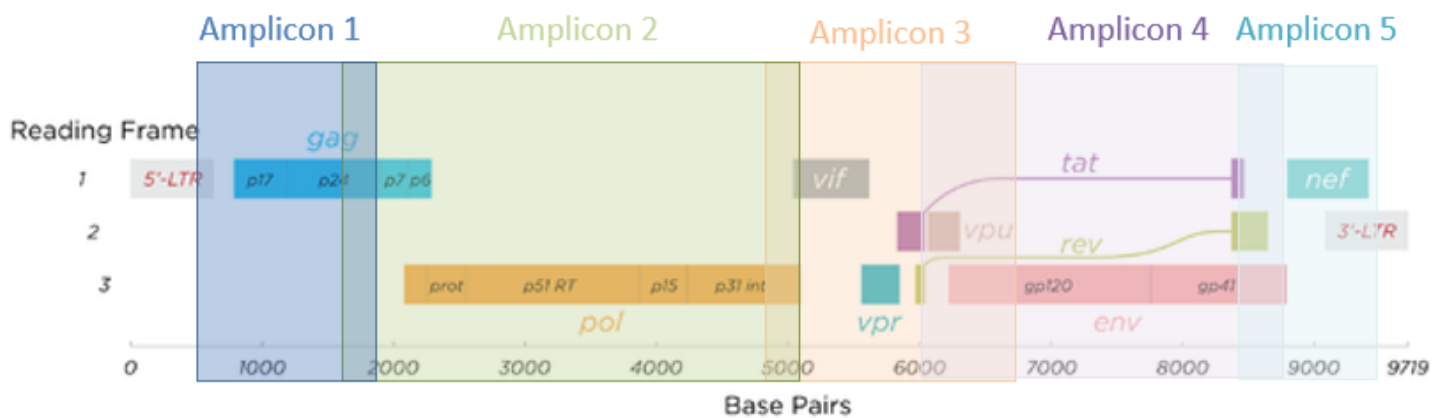
- Pipetting robot – open system to be used for pre- or post-PCR automation
- IT Services (customization, data import, integration / LIS connectivity ...)
- **Pipetting Robot also available through reagent rental**



WHOLE GENOME ANALYSIS

DeepChek® Assay Whole Genome HIV-1 Genotyping (24 tests) (CE IVD - 170A24)

- Robust NGS-based kit with Software
- Drug resistance assessment for all classes including new entry & capsid inhibitors
- Coverage : 9719 bp
- Number of amplicons: 5x ~750 to 3500 bp
- Sustainable solution for new mutations / drugs / classes
- Amplicons can be pooled with other DeepChek® applications (Ex. HCV, SARS-CoV-2)
- Can be used for runs of 24 / 48 / 96 / 384 samples
- 3-4 days for full workflow
- Push-button analysis
- Compatible with most NGS platforms



Drug Resistance Assessment
for new antiretroviral drugs
(entry & capsid inhibitors)



	Generic name	Assessment	Resistance mutations >20.00%
RT	Atazanavir/r	I	A71V (99.2%), L90M (97.22%)
	Darunavir/r 600/100 mg BID	S	
	Darunavir/r 800/100 mg QD	S	
	Lopinavir/r	I	L10R (99.07%), A71V (99.2%), L90M (97.22%)
	Tipranavir/r	S	
NRTI	Abacavir	I	M41L (98.73%), T215Y (86.18%)
	Emtricitabine	S	
	Islatravir	S	
	Lamivudine	S	
	Tenofovir	I	M41L (98.73%), T69D (98.67%), T215Y (86.18%)
NNRTI	Zidovudine	R	T215Y (86.18%)
	Doravirine	S	
	Elvitegravir	R	Y181C (86.49%)
	Etravirine	R	Y181C (86.49%)
	Nevirapine	R	Y181C (86.49%)
IN	Rilpivirine	R	Y181C (86.49%)
	Bictegravir	S	
	Cabotegravir	S	
	Dolutegravir 50mg BID	S	
	Dolutegravir 50mg QD	S	
INSTI	Elvitegravir	S	
	Raltegravir	S	
	Enfuvirtide	S	
	Fostemsavir	S	
	Lenacapavir	S	



HIGHLIGHTS on the DeepChek® technology

ROBUST CE-IVD and RUO

FLEXIBLE
For low to high
throughput (1-384
samples in one run)

FAST
~1-2 days (SANGER)
~2-4 days (NGS)

STANDARDIZED
Kits, Software, Support,
Integration with
LIMS/HIS, Automation

COMPREHENSIVE

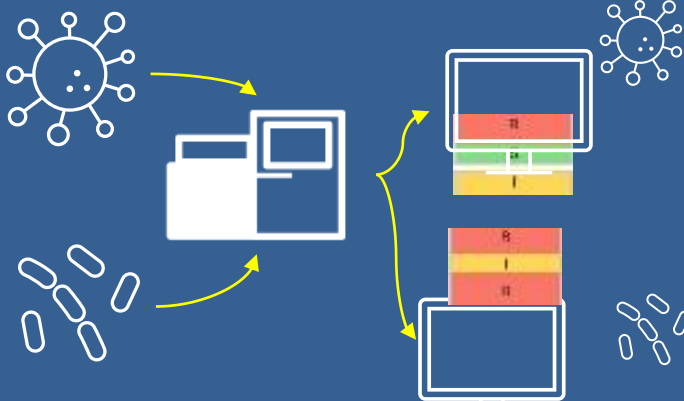
Genotyping, Drug
Resistance, Tropism,
Reporting, Storage...

SECURED
Healthcare Cloud Access,
Local installation

POOLING CAPACITY

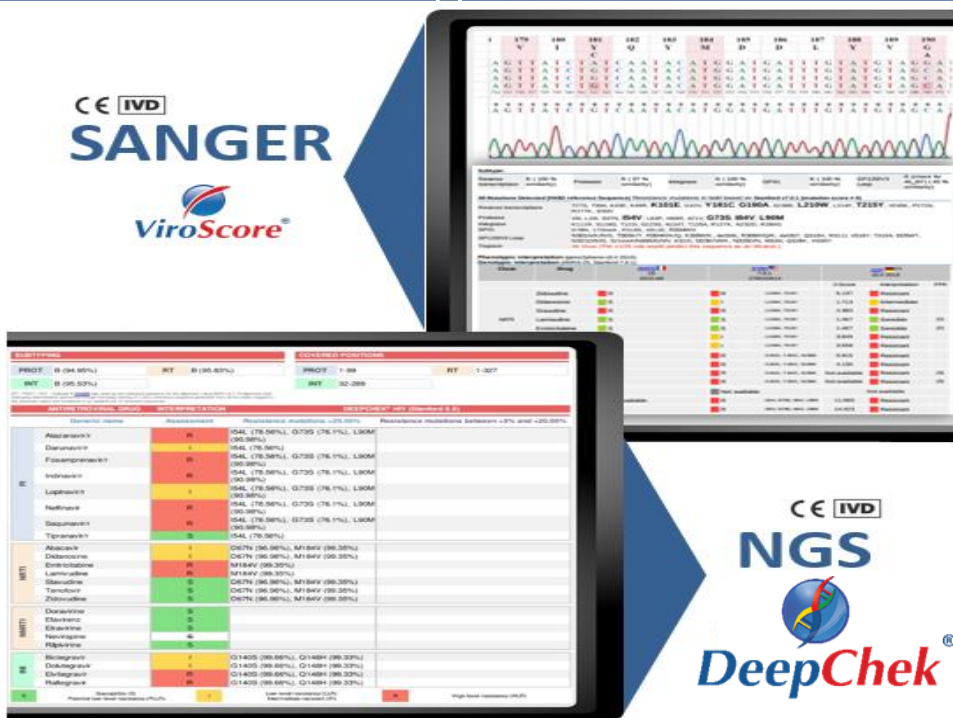
*Pool several
DeepChek®
Libraries (samples)
from different
applications in the
same NGS run*

COST EFFECTIVE



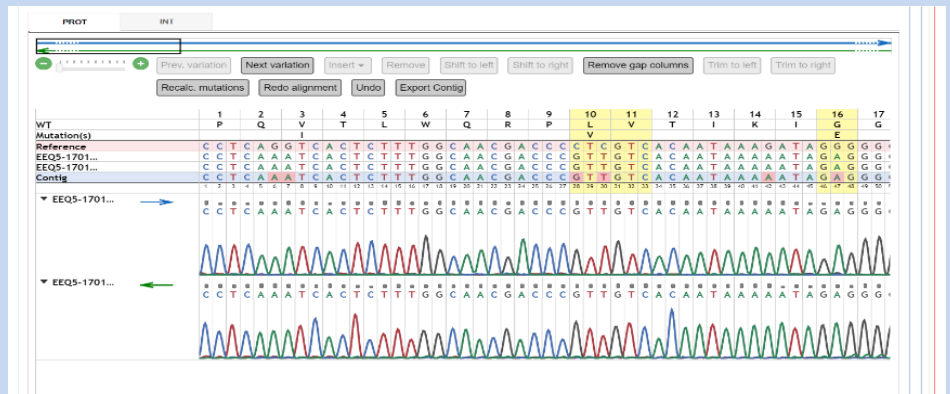
- HIV
- SC2
- TB
- HCV
- HBV
- CMV
- HSV
- 16s
- RNA
- HPV
- BKV
- ...

REPORTING

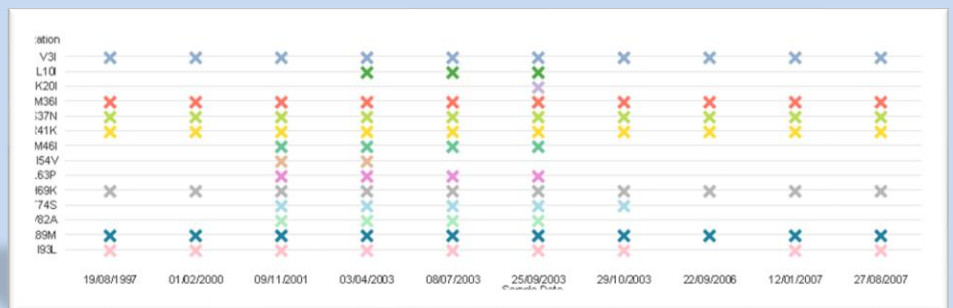


KEY FEATURES

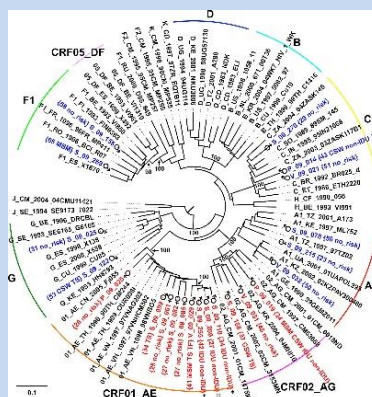
EMBEDDED CHROMATOGRAM EDITOR



SINGLE or CUMULATIVE GENOTYPING



SUBTYPING DRUG RESISTANCE ASSESSMENT



Drug	ANRS 31 12/2020	STAN 9.0 03/2021
Zidovudine	R	R
Didanosine	Not available	R
Stavudine	Not available	R
Lamivudine	S	S
Emtricitabine	S	S
Abacavir	R	I
Tenofovir	R	I

Algorithm	Sanger based sequencing	15.00%	10.00%	5.00%	3.00%
Abacavir	ANRS	I	I	I	I
Grade	Grade	I	I	I	I
Rega Institute	Rega Institute	S	S	S	S
Stanford	Stanford	LLR	LLR	LLR	LLR
Didanosine	ANRS	NA	NA	NA	NA
Grade	Grade	I	I	I	I
Rega Institute	Rega Institute	S	S	S	S
Stanford	Stanford	LLR	LLR	LLR	LLR
Emtricitabine	ANRS	R	R	R	R
Grade	Grade	R	R	R	R
Rega Institute	Rega Institute	R	R	R	R
Stanford	Stanford	HLR	HLR	HLR	HLR

- HIVDB/STANFORD
- ANRS
- REGA
- GENO2PHENO
- HIV-GRADE



- RIS
- RENAGENO



OTHER FEATURES



Technology

- Web-based (browser only)
- Software & database
- Local or Cloud (+HDS) hosting
- Unlimited user accounts
- Unlimited analyses



Security

- Data access restriction (pools, read-only mode...)
- Logging of user accesses
- Encrypted database
- Reports validation



Main features

- SANGER data management (AB1, FASTA) with embedded chromatogram editor
- NGS data management (FASTQ) with dedicated pipeline
- Genotyping (per sample & cumulative)
- Subtyping
- Virtual-phenotyping
- Drug resistance through up-to-date guidelines
- GSS determination and regiment ranking
- Tropism
- Reporting & labelling



Additional features

- Report customization
- Contamination check
- Quality control
- Export (reports, FASTA, XML...)
- Batch mode analysis
- Data mining



Services

- Constant updates
- Annual upgrades (versions)
- Historical data import
- LIMS integration
- HIS integration
- Support
- Trainings

REFERENCES & CONTACT

Product:

DeepChek® CE-IVD Assays

- PR / RT Genotyping and Drug Resistance (CE-IVD)
- INT Genotyping and Drug Resistance (CE-IVD)
- DeepChek® Assay Whole Genome HIV-1 Genotyping (CE-IVD)
- PR / RT Sequencing V1 (CE-IVD) (accessory for 121A24) (Sanger)
- INT Sequencing V1 (CE-IVD) (accessory for 122A24) (Sanger)

DeepChek® RUO Assays

- PR / RT Genotyping and Drug Resistance (RUO)
- INT Genotyping and Drug Resistance (RUO)
- V3 Loop/Tropism Assay (RUO)

General Laboratory Products

- DeepChek® SANGER SEQUENCING REACTION V2 (24rx/48rx)
- DeepChek® NGS LIBRARY PREPARATION V1 (24 indexes)
- DeepChek® NGS LIBRARY PREPARATION V1 (48 indexes)
- DeepChek® NGS LIBRARY PREPARATION V1 (96 indexes)
- DeepChek® NGS LIBRARY PREPARATION V1 (384 indexes)
- DeepChek® NGS Clean-up beads (60mL)
- DeepChek® 96x0.2 mL wells plate (25 units)

Software – HIV module

- DeepChek® (CE-IVD)
- ViroScore® (CE-IVD)

Reference:

- 121A24
- 122A24
- 170A24
- 125A24
- 126A24
- 101B24
- 102C24
- 103A24
- 123A24/123A48
- 116B24+124B24
- 116B48+124B48
- 116B96+124B96
- 116B384+124B384
- N411-02
- B70501-01
- S-12-023 (HUS)
- S-09-014 (VSH)

ABL

Advanced
Biological
Laboratories

Diagnostics

ABL Diagnostics S.A.

42, rue Olivier Métra – Bat E1
75020, PARIS France

contact@abldiagnostics.com
<https://www.abldiagnostics.com>

Phone :+334 9105 1878



Improving Disease Management